

seafloor

imo carpet qualities



seafloor

imo carpet qualities

The overview on the wide Radici proposal for cruise and yachts.

Thanks to IMO certification we can offer a wide range of products as printed tufting, wilton jacquard and handtuft carpet.

All of this technologies allow us to create your custom design with a touch of class and prestige.

The whole collection with the priceless value of Made in Italy.

our story

1950 Radici saw the light of day as Tappetificio Nazionale, a company weaving carpets on Jacquard looms. Within just a few years, the company had become a player in all the leading international markets. By the 1970s it had almost a thousand employees.

1972 The fitted-carpet division was set up and the Sit-in brand was launched with major investments in tufting machines, dyeing and finishing machinery. In just a few years it became market leader in Italy, gained significant market share in Europe and opened branches in the main European countries and in the USA.

1985 Acquisition of Due Palme, Europe's oldest and largest manufacturer of wool fitted carpets woven on Wilton and Jacquard looms. After installing a ChromoJET printer, Radici became the European manufacturer offering the market the most complete and sophisticated range of products.

2017 Almost 70 years after it was founded, Radici is the only Italian manufacturer of wall-to-wall carpeting through its Radici Contract, Sit-in and Due Palme brands.

quality

What does quality mean?

For Radici, quality is creating top grade yarn in Italy using the latest cutting-edge technology for the carpet industry.

And where progress is not enough, that's where tradition comes into its own, the innate drive to create a product that is not just beautiful but also reliable over the long term, in line with the sustainability that is necessary today.

Alongside the quality of Italian products, Radici offers the widest range of wall-to-wall carpeting available on the market.

technology

Tufting
ChromoJET® Printed
Wilton Jacquard
Wilton Face to Face
Axminster
Handtuft

The background of the image shows the edges of many pages in a book, creating a dense, layered texture. The colors are muted, with shades of grey, blue, and brown. A dark, semi-transparent overlay covers the entire image, making the text stand out.

Step by step realizations

Project 1: Rooms & Corridors

Design

Our team of designers transforms each idea into a pattern that matches the customer's needs.



ARS 062



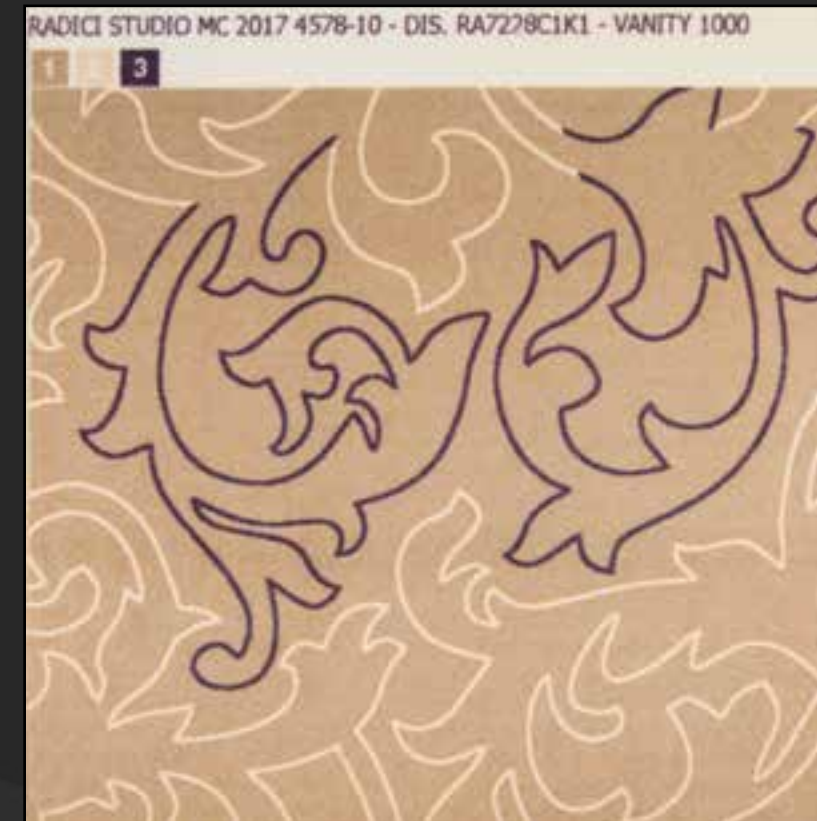
ARS 002



ARS 552

Samples

Starting with a selection of ARS – RAL – PANTONE colours, or using a material that has been supplied to us, our laboratory creates 1m x 1m samples with the selected colours to faithfully recreate the final result.



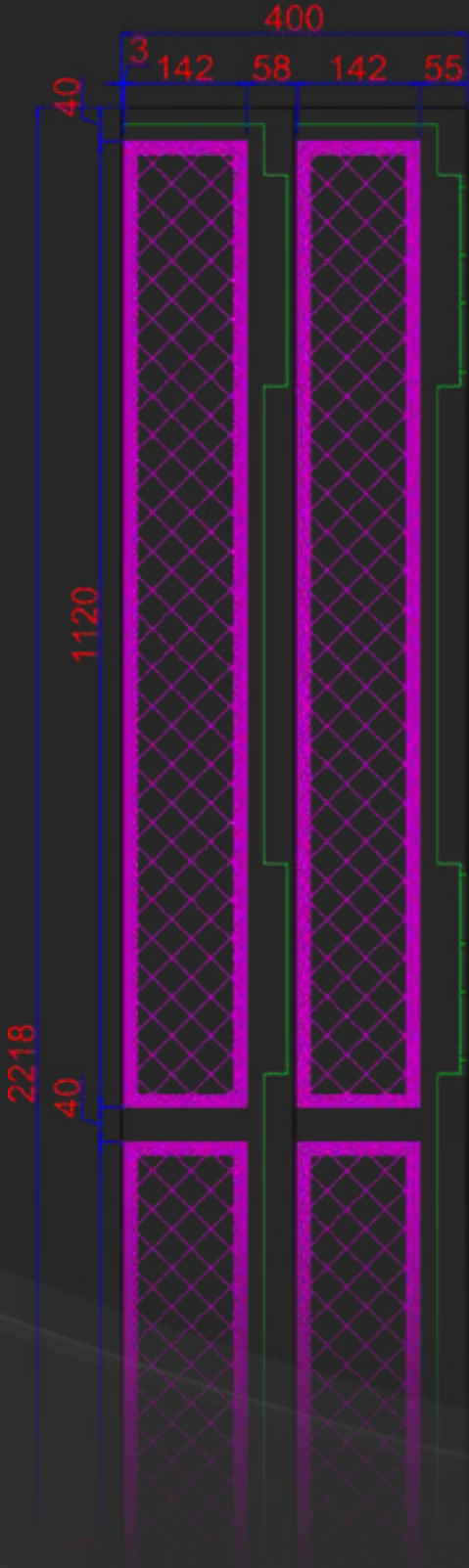
Laying Plan

| FLOOR | AREA | MTL | H | M² | DESIGN | NOTES |
|-------|-------------------|-------|------|--------|----------|-------------|
| 5 | ROOMS 502 + 504 | 11,20 | 4,00 | 44,80 | RA5061C1 | special cut |
| 5 | ROOMS 503 + 505 | 11,20 | 4,00 | 44,80 | RA5061C1 | special cut |
| 5 | ROOMS 506 | 28,50 | 4,00 | 114,00 | RA5061C2 | - |
| 5 | ROOMS 507 + 509 | 11,20 | 4,00 | 44,80 | RA5061C3 | - |
| 5 | COMPLETE ROOM 508 | 28,50 | 4,00 | 114,00 | RA5061C3 | - |
| 4 / 5 | CORRIDORS | 22,20 | 4,00 | 88,80 | RA6651C1 | 88,80 |

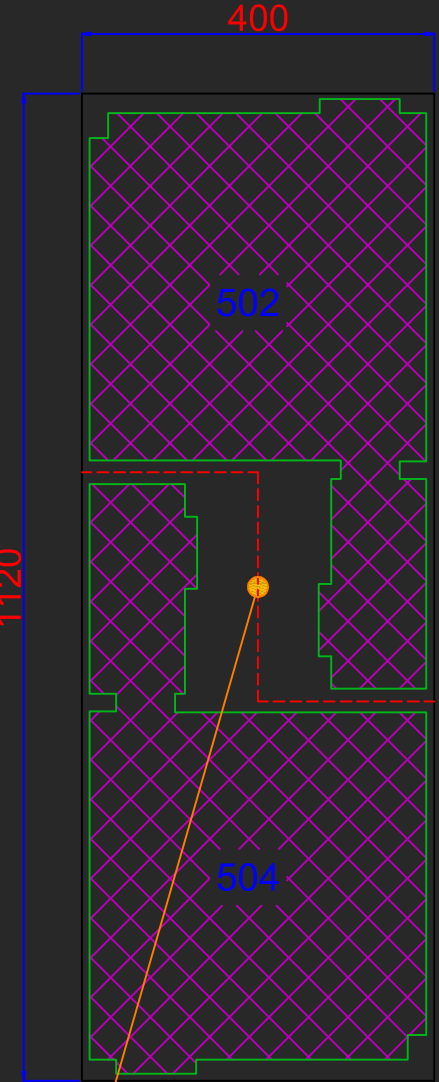
TOTAL TO PRODUCE: 451,20 M²

Upon request, our surveyor can devise bespoke solutions to reduce or eliminate material waste.

CORRIDORS 4th / 5th FLOOR
#1 ROLL OF 22,20 lm x 4 m



ROOMS 502 / 504
#ROLL OF 11,20 lm x 4 m



- SPECIAL CUT
- SOLID COLOR
- BORDER D. RA6717B2
- CENTRAL D. RA5061

Layout

Once everything has been defined, we can create a setting for the areas for a final evaluation of the design and colours.



Final Result



Project 2: Yacht Design & Samples



PATTERN 1

100% NEW ZEALAND WOOL

0,37 x 0,3 m

- ARS 001 // 10 mm CUT PILE
- ARS 001 // 6 mm CUT PILE
- ARS 489 // 6 mm CUT PILE
- ARS 176 // 6 mm CUT PILE

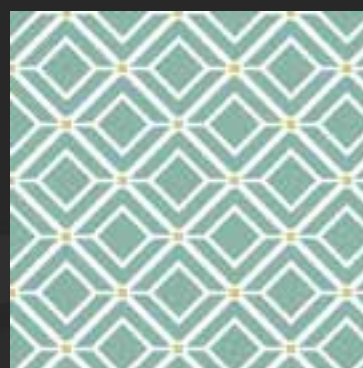
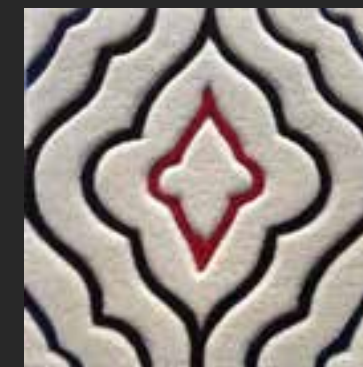


PATTERN 5

100% NEW ZEALAND WOOL

0,28 x 0,3 m

- ARS 001 // 10 mm CUT PILE
- ARS 076 // 6 mm CUT PILE
- ARS 176 // 6 mm CUT PILE
- ARS 282 // 6 mm CUT PILE



PATTERN 2

100% NEW ZEALAND WOOL

0,3 x 0,3 m

- ARS 001 // 6 mm CUT PILE
- ARS 328 // 10 mm CUT PILE
- ARS 393 // 10 mm CUT PILE



PATTERN 6

100% NEW ZEALAND WOOL

0,3 x 0,3 m

- ARS 001 // 10 mm CUT PILE
- ARS 328 // 10 mm CUT PILE



PATTERN 3

100% NEW ZEALAND WOOL

0,4 x 0,3 m

- ARS 001 // 6 mm CUT PILE
- ARS 055 // 10 mm CUT PILE

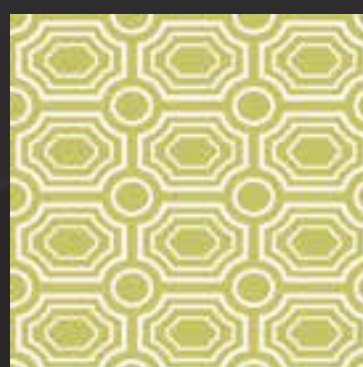
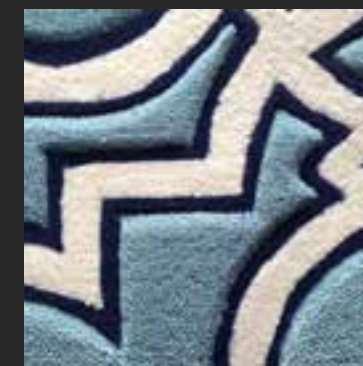


PATTERN 7

100% NEW ZEALAND WOOL

0,7 x 0,4 m

- ARS 001 // 6 mm CUT PILE
- ARS 489 // 10 mm CUT PILE
- ARS 176 // 6 mm CUT PILE

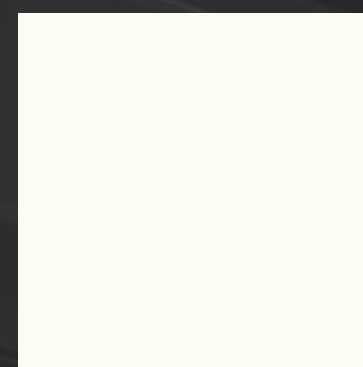


PATTERN 4

100% NEW ZEALAND WOOL

0,4 x 0,3 m

- ARS 001 // 6 mm CUT PILE
- ARS 393 // 10 mm CUT PILE













PATTERN 0

100% NEW ZEALAND WOOL

PLAIN CARPET

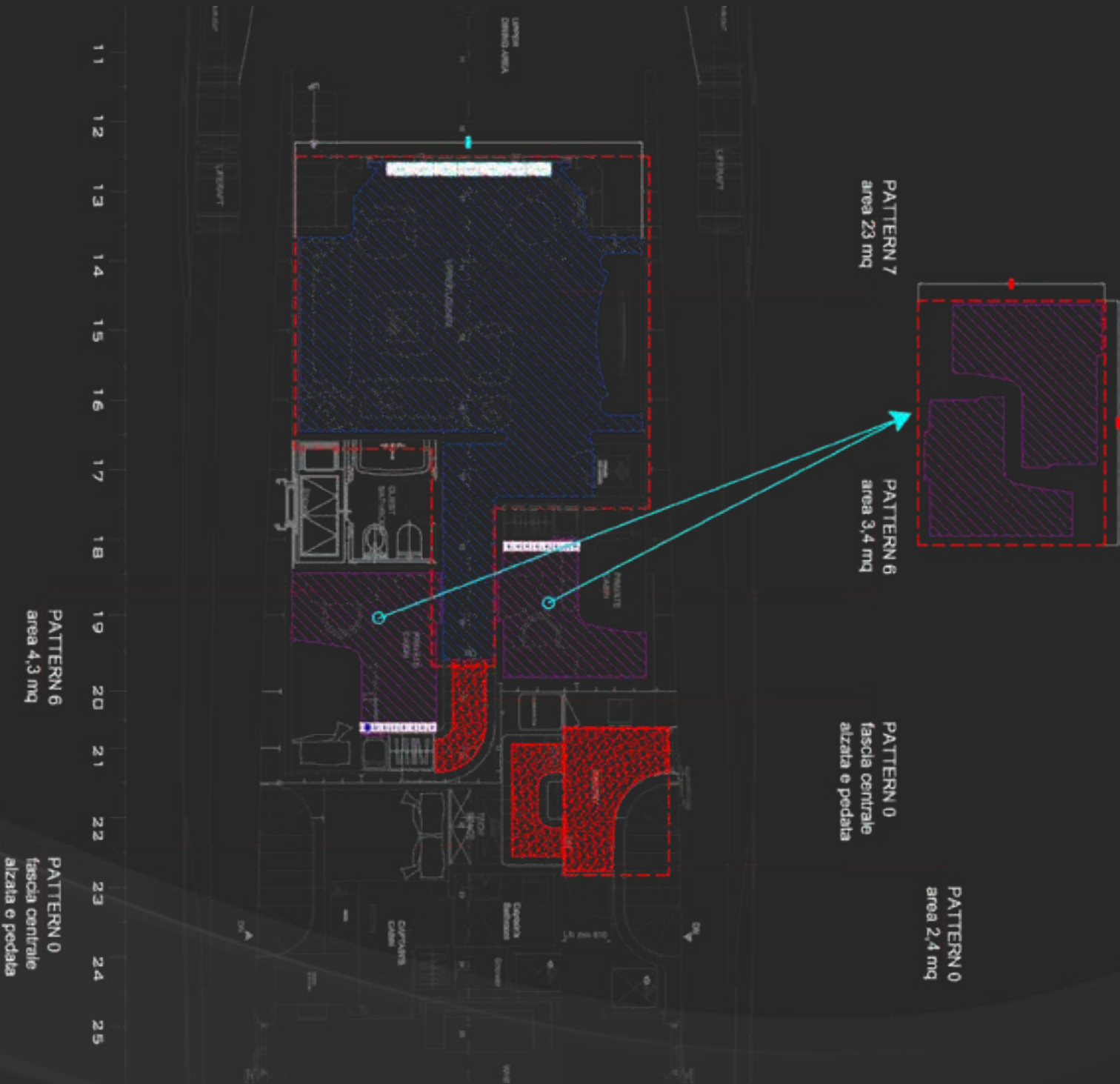
- ARS 001 // 10 mm CUT PILE

Laying Plan

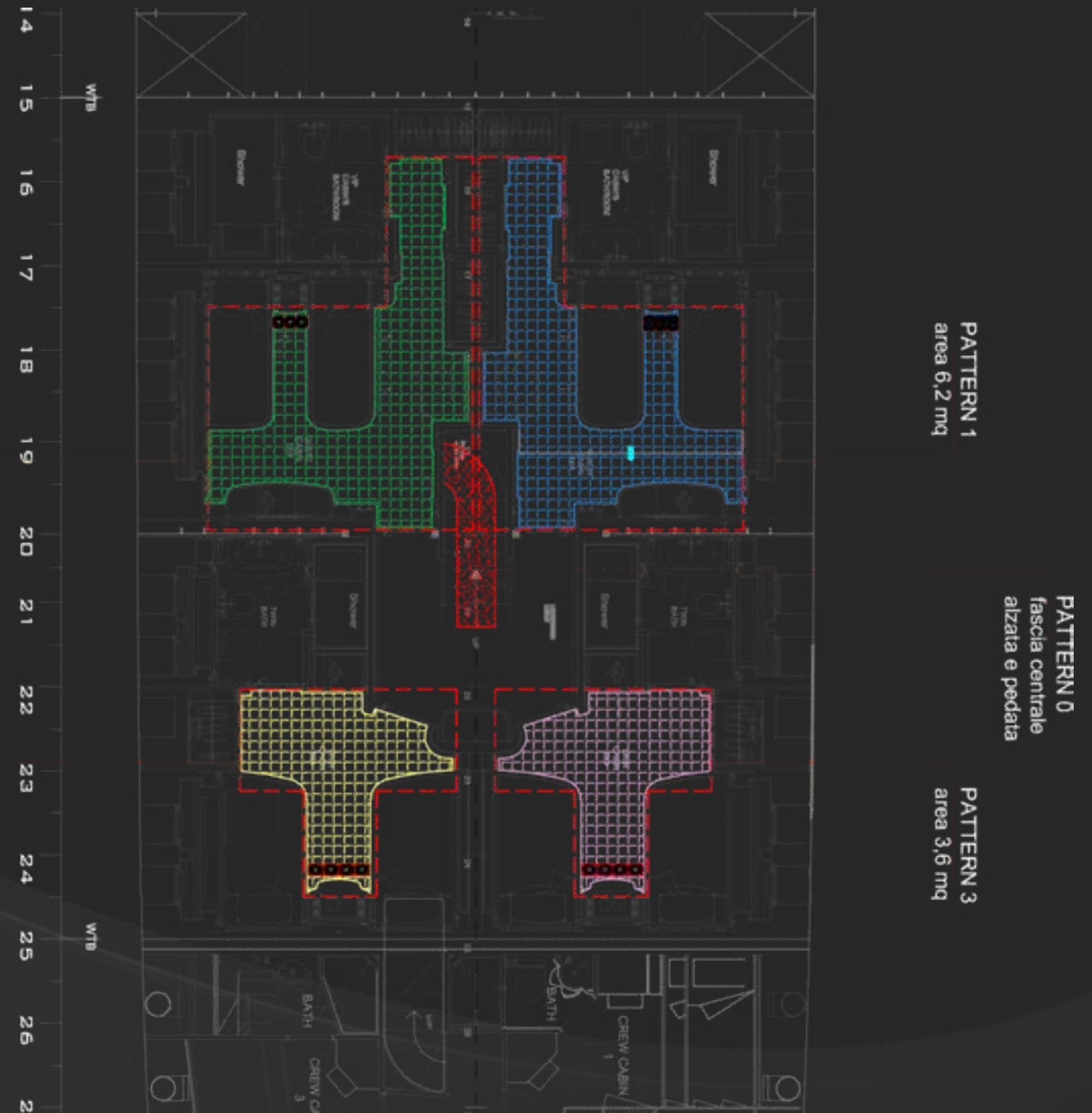
| | | DESIGN | DECK | AREA | MTL | H | MQ |
|---|---|------------|---------------|-------------|-------|-------|-------|
|  | PATTERN 00 | UPPER | PANTRY | 2,35 | 1,70 | 4,00 | |
| | | UPPER | STAIRS | 3,60 | 3,00 | 10,80 | |
| | | MAIN | PANTRY | 5,00 | 2,80 | 7,40 | |
| | | LOWER | STAIRS | 4,70 | 1,60 | 7,52 | |
|  |  | PATTERN 01 | LOWER | GUEST CABIN | 5,00 | 3,50 | 12,28 |
| |  | PATTERN 02 | LOWER | GUEST CABIN | 5,00 | 3,50 | 12,28 |
| |  | PATTERN 03 | LOWER | TWIN CABIN | 2,80 | 2,80 | 5,15 |
| |  | PATTERN 04 | LOWER | TWIN CABIN | 2,80 | 2,80 | 5,15 |
|  |  | PATTERN 05 | MAIN | SALON | 10,30 | 5,00 | 51,50 |
| | | MAIN | CORRIDOR | 6,20 | 2,30 | 10,30 | |
| | | MAIN | CABIN | 4,20 | 7,00 | 29,40 | |
|  | PATTERN 06 | UPPER | PRIVATE CABIN | 3,90 | 3,00 | 11,70 | |
|  | PATTERN 07 | UPPER | LOUNGE | 8,05 | 5,60 | 31,60 | |

TOTAL TO PRODUCE: 199 M²

Upper Layout



Lower Layout



Main Layout



Final Result

LOWER TWIN CABIN

PATTERN 04



LOWER GUEST CABIN

PATTERN 01



MAIN STAIRS

PATTERN 00



MAIN SALON

PATTERN 05



MAIN CORRIDOR

PATTERN 05



MAIN CABIN

PATTERN 05



LOWER TWIN CABINS

PATTERN 03/04



UPPER LOUNGE

PATTERN 07



The background of the image is a close-up, slightly blurred view of a large bundle of multi-colored fibers or cables. The colors include shades of blue, red, yellow, and green, creating a vibrant, textured pattern. The fibers are bundled together and appear to be part of a larger infrastructure project.

Our products

standard IMO collection

VERONA

A PROVED CROSS-OVER EXTREMELY RESISTANT

Construction: Tufting crossover
Composition: 100% Polyamide 6.6
Colors available: 25

MOSAICO

A PERFECT CUT & LOOP COMBINATION

Construction: Tufting cut & loop
Composition: 100% Polyamide
Colors available: 25

MONTECARLO

THE ART OF SOLID COLORS

Construction: Tufting cut pile
Composition: 90% NZ Wool / 10% Pes
Colors available: 70

FLORIDA

YARN DYED QUALITY FOR ANY DESTINATION

Construction: Tufting cross over
Composition: 80% NZ Wool / 20% PA
Colors available: 4

ABETONE

A UNIQUE WILTON COLLECTION

Construction: Wilton jacquard cut pile
Composition: 100% New Zealand Wool
Colors available: 50

ABETONE CLUB

A SUPREME CUT & LOOP WILTON COLLECTION

Construction: Wilton cut & loop pile
omposition: 100% New Zealand Wool
Colors available: 16

ABETONE SOLO

PREMIUM QUALITY IN SIMPLE DESIGN

Construction: Wilton cut & Loop pile
Composition: 100% New Zealand Wool
Colors available: 14

special IMO qualities

HI DECOR

EXTREME RESISTANCE IN HIGH DEFINITION

Construction: Tufting printed
Composition: 100% Polyamide 6.6
Available in: 900 / 1100 / 1300 g/m²

MOSAICO

A PERFECT CUT & LOOP COMBINATION

Construction: Tufting printed cut & loop
Composition: 100% Polyamide
Yarn weight: 950 g/m²

WOOL DECOR

THE 80 / 20 CUSTOM REVOLUTION

Construction: Tufting printed
Composition: 80% NZ Wool / 20% Pa
Available in: 1250 / 1400 g/m²

WOOL STYLE

100% BOUCLÈ 100% WOOL

Construction: Tufting loop pile
Composition: 100% NZ Wool
Colors available: 25

WINDSOR

MORE THAN A WOVEN QUALITY

Construction: Tufting cut pile
Composition: 80% NZ Wool / 20% Pa

AXMINSTER

WHEN TRADITION CREATES CARPET

Construction: Woven Axminster
Composition: 80% NZ Wool / 20% Pa
Available in: 7x7 / 7x8 / 7x9 / 7x10

CREMA 7

CARPET IS NOT ONLY FOR FLOOR

Construction: Wilton loop pile
Composition: 100% New Zealand Wool
Wall Certificated

CHROMO PROJECT

The definitive range of printed carpets.

Using our modern ChromoJET® microinjection printing machine, we can reproduce any possible design, in any possible color variant on natural or syntetic fibre.

PRINTED **CARPET**®
TUFTING TECHNOLOGY **chromoJET**

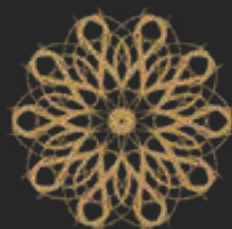
TOTAL CUSTOMIZATION
STARTING FROM 100m²

1 **MILION PIXEL/M²**
RESOLUTION

UP TO **16** **COLORS** **NYLON** 6 & 6.6

100% **NEW ZEALAND** **WOOL**® **80/20%**
WOOL / PA





PRESTIGE

The collection aims to customize a class product that draws on the historic tradition of woven carpets.

WOVEN **CARPET** **WILTON JACQUARD**
AXMINSTER

TOTAL CUSTOMIZATION
STARTING FROM **200 m²**

2 UP TO 5 **AXMINSTER**
COLORS **UP TO 16**

12 BASES 100%
CUSTOMIZABLE

100% **NEW ZEALAND**
WOOL®

CUT
& LOOP

COMBINATIONS



HANDTUFT

A hand-tufted carpet is a true needlework product where every single tuft has been positioned by hand.

These characteristics enable any precise and distinguished hand-crafted pattern to be created, without limits to colour and dimensions.

Three-dimensional effects that are pleasing to the eye and to the touch can also be achieved by carving technique that consists of cutting grooves into the carpet pile.



VERONA

A PROVED CROSS-OVER EXTREMELY RESISTANT

TUFTING CROSSOVER

PILE HEIGHT



5,7 mm

COMPOSITION



100% POLYAMIDE 6.6

YARN WEIGHT



880 g/m²

RECOMMENDED FOR

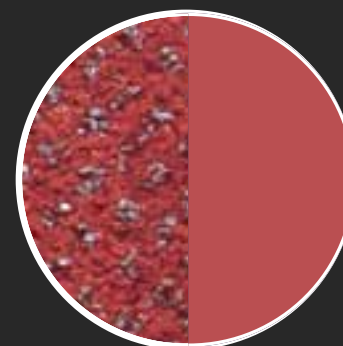
CORRIDORS CABINS

PUBLIC AREAS



VERONA

25 COLORS



ARANCIO



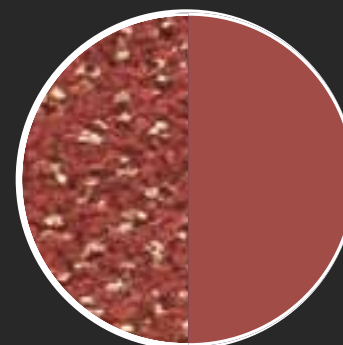
ROSSO



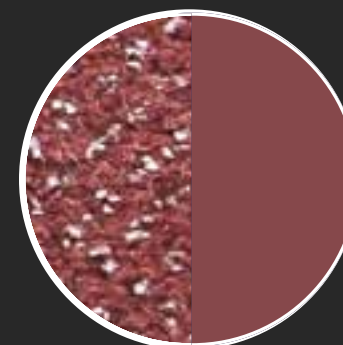
BORGOGNA



AMARENA



ARAGOSTA



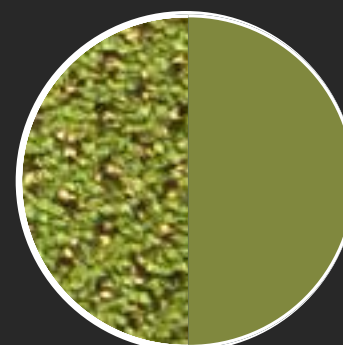
CORALLO



COTTO



FORESTA



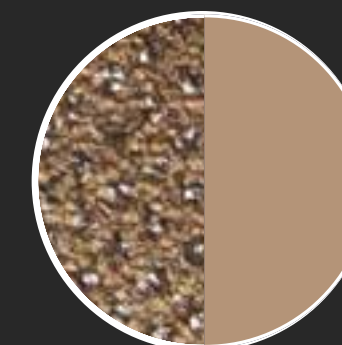
OLIVA



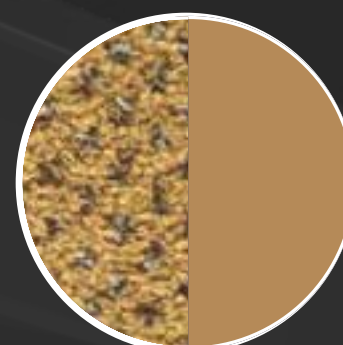
FLANELLA



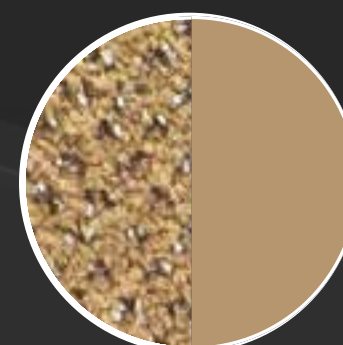
GRILLO



DAINO



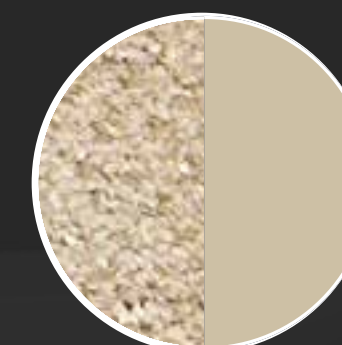
OCRA



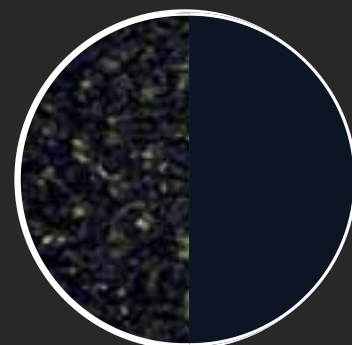
CAMMELLO



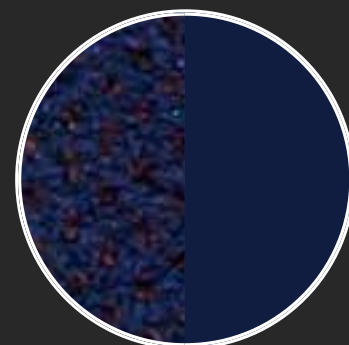
TORTORA



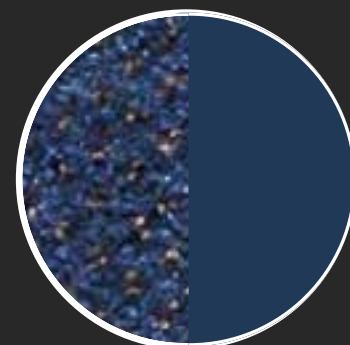
SABBIA



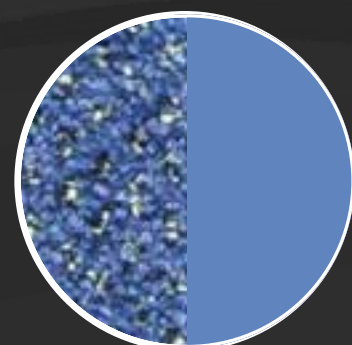
NAVY



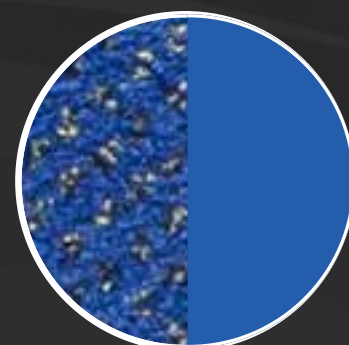
ROYAL



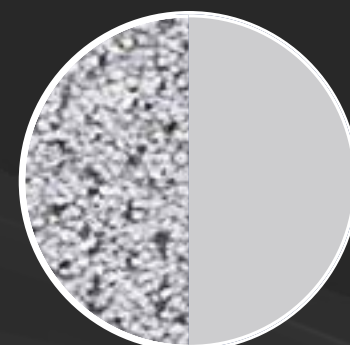
OCEANO



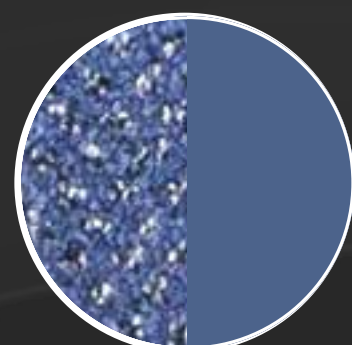
COBALTO



MARINO



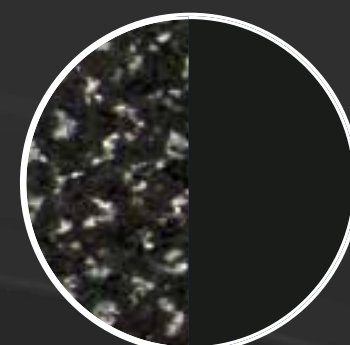
CENERE



TIRRENO



HUMUS



LIQUIRIZIA

MOSAICO

A PERFECT CUT & LOOP COMBINATION

TUFTING CUT&LOOP

PILE HEIGHT



5,2 mm

COMPOSITION



100% POLYAMIDE

YARN WEIGHT



950 g/m²

RECOMMENDED FOR

CORRIDORS

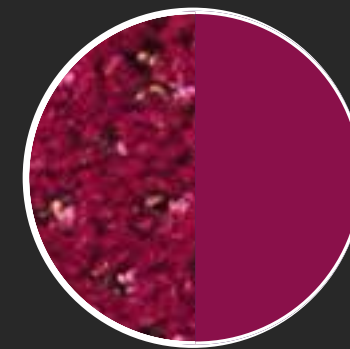
CABINS

PUBLIC AREAS

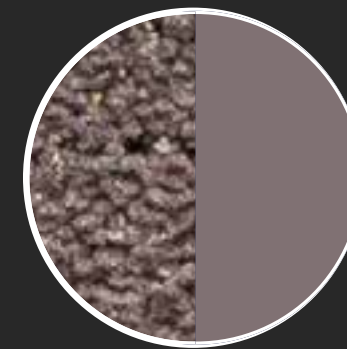


MOSAICO

25 COLORS



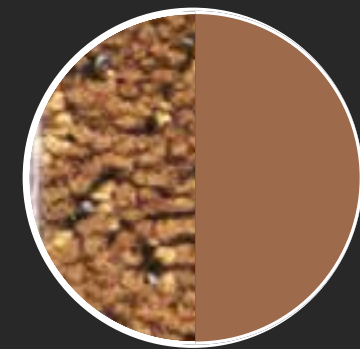
CHERRY



VISONE



CACAO



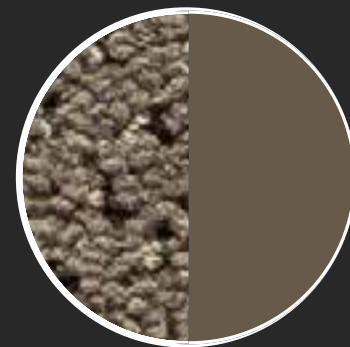
OCRA



STONE



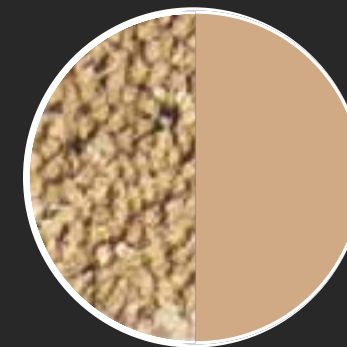
FANGO



CARDAMOMO



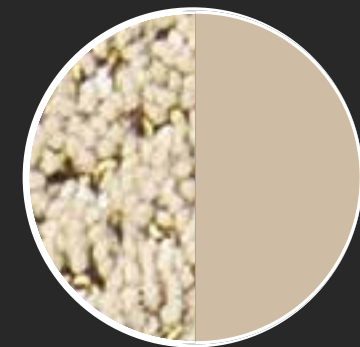
MIELE



NOCCIOLA



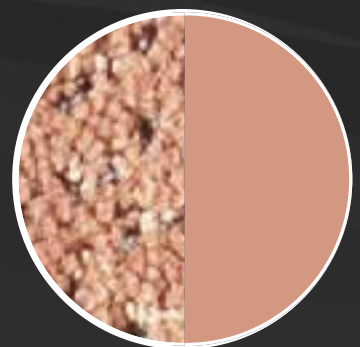
DAINO



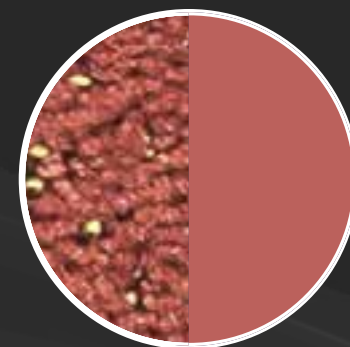
BISCOTTO



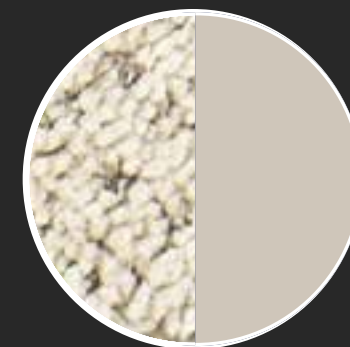
RAFIA



PESCA



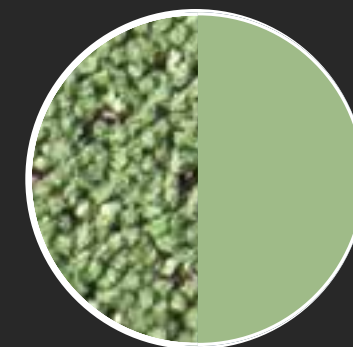
AMBRA



SABBIA



FORESTA



OPALE



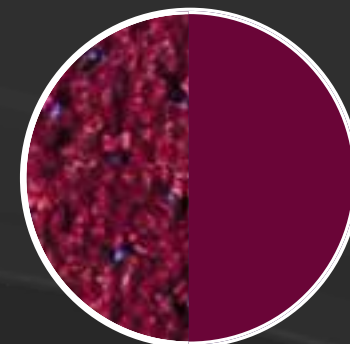
ARGENTO



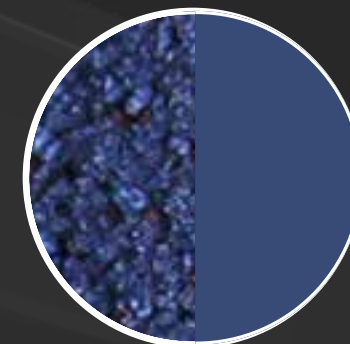
MELOGRANO



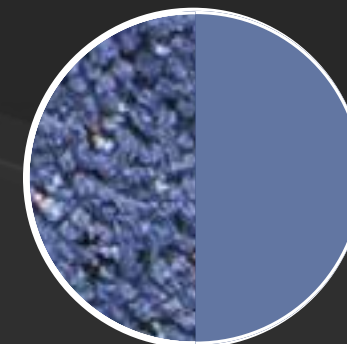
RUBINO



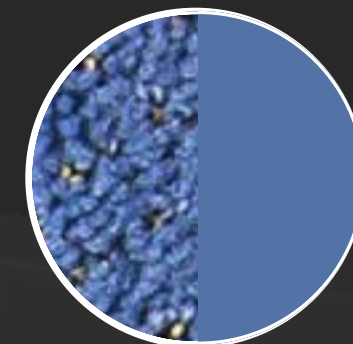
AMARENA



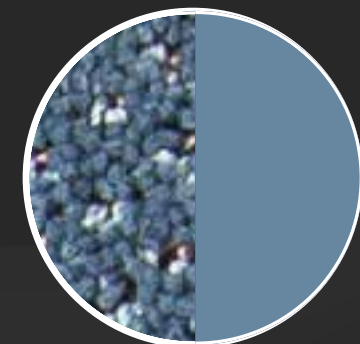
JONIO



ABISSO



ADRIATICO



MARINO

MONTECARLO

THE ART OF SOLID COLORS

TUFTING CUT PILE

PILE HEIGHT



6,3 mm

COMPOSITION



90% NEW ZEALAND WOOL
10% POLYESTER

YARN WEIGHT



1250 g/m²

RECOMMENDED FOR

CORRIDORS

CABINS

PUBLIC AREAS



MONTECARLO

70 COLORS

| | | | | | | | | | | |
|--|---|---|--|---|---|---|---|---|---|---|
|  |  |  |  |  |  |  |  |  |  |  |
| SHELL PINK | SALMON | BLUSH | RASPBERRY | CORAL | BRUNT ORANGE | WILLOW | SPEARMINT | SOFTPINE | ARGENTO | IRIS |
|  |  |  |  |  |  |  |  |  |  |  |
| FLAME | CARDINAL | RUBY | BORDEAUX | GINGER | FIREFLY | LILAC | PURPLE | JET | PARMA | LATTE |
|  |  |  |  |  |  |  |  |  |  |  |
| SNOW | CREAM | NOUGAT | WARM BEIGE | ORCHID | OATMEAL | CHINABLUE | DENIM | ARCTIC | SAPPHIRE | AVENA |
|  |  |  |  |  |  |  |  |  |  |  |
| VANILLA | VOLCANO | BEECH | WALNUT | HARVEST | SAND | NAVY | FANGO | MIDNIGHT | COBALT | ROYAL |
|  |  |  |  |  |  |  |  |  |  |  |
| STONE | LINEN | STRAW | OPAL | APPLE | ONYX | BLUEBIRD | AZURE | BISONTE | CHOCO | MOKA |

FLORIDA

YARN DYED QUALITY FOR ANY DESTINATION

TUFTING CROSSOVER

PILE HEIGHT



6 mm

COMPOSITION



80% NEW ZEALAND WOOL
20% POLYAMIDE

YARN WEIGHT



1200 g/m²

RECOMMENDED FOR

CORRIDORS

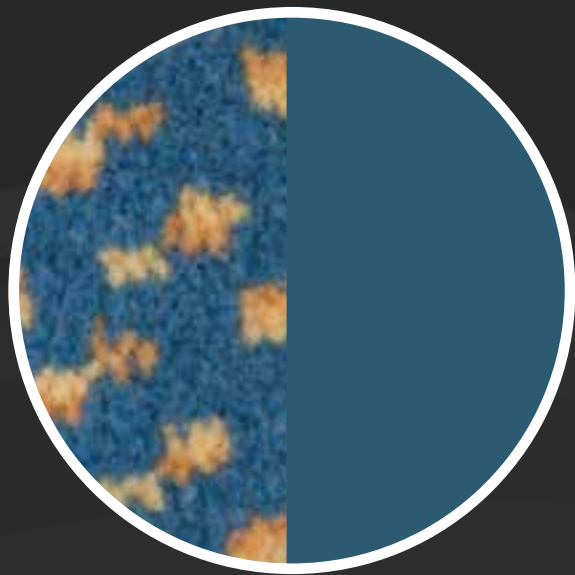
CABINS

PUBLIC AREAS

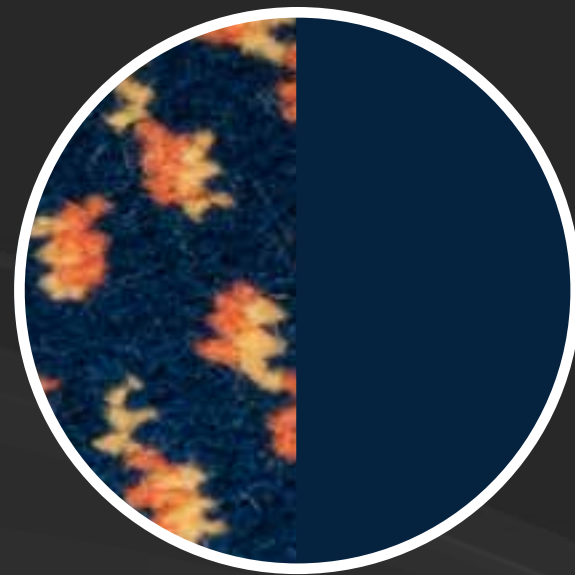


FLORIDA

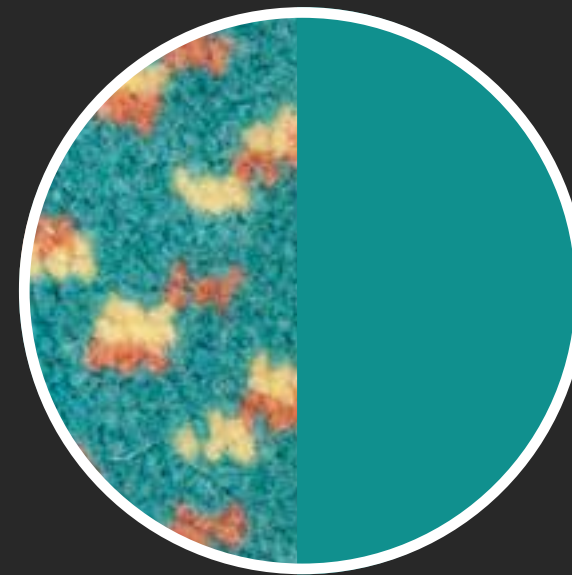
4 COLORS



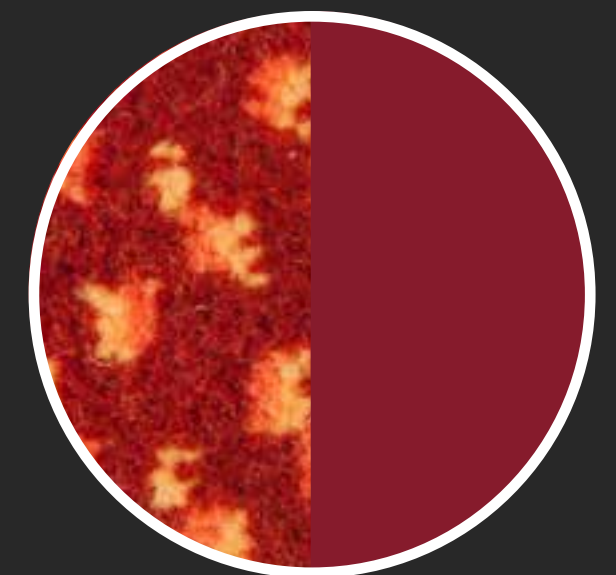
MARINO



NAVY



FORESTA



BORDEAUX

ABETONE

A UNIQUE WILTON COLLECTION

WILTON CUT PILE

PILE HEIGHT



7 mm

COMPOSITION



100% NEW ZEALAND WOOL

YARN WEIGHT



1322 g/m²

RECOMMENDED FOR

CORRIDORS

CABINS

PUBLIC AREAS



ABETONE

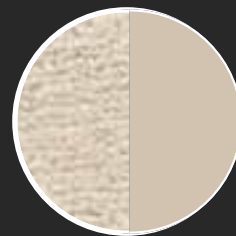
50 COLORS



SNOW



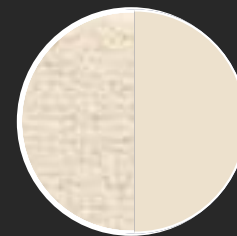
PANNA



AVORIO



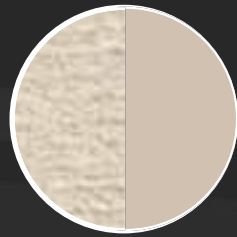
CREMA



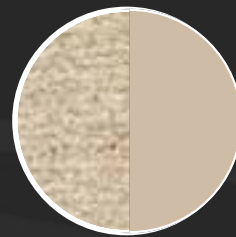
OATMEAL



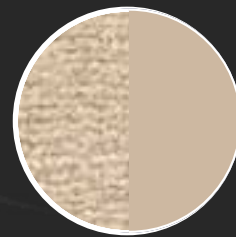
MIELE



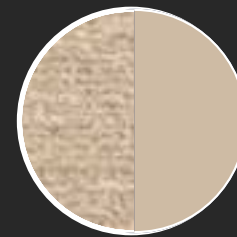
POLVERE



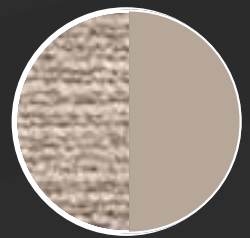
NOCCIOLA



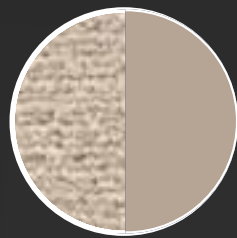
STONE



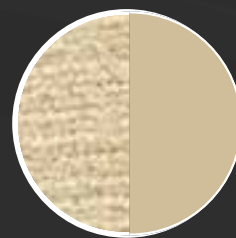
LINEN



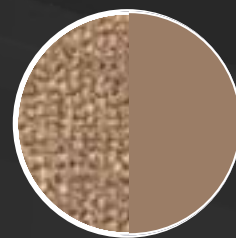
DAINO



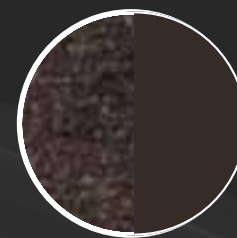
BEIGE



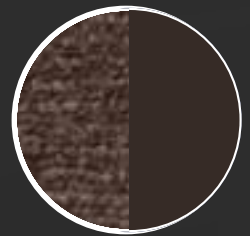
STRAW



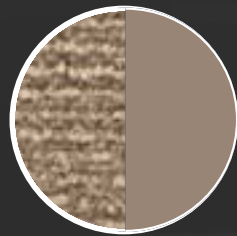
ANTILOPE



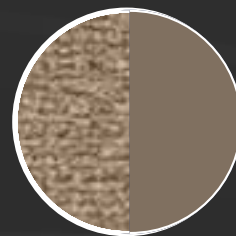
ESPRESSO



MARRONE



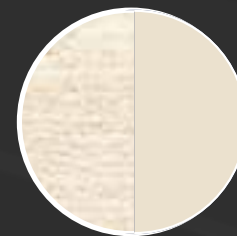
CAMOSCIO



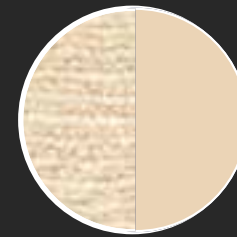
BEIGE



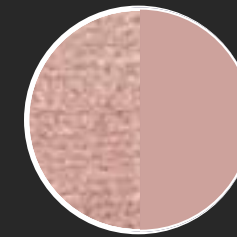
NOCE



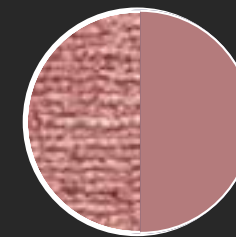
VANIGLIA



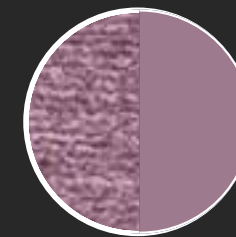
CARAMEL



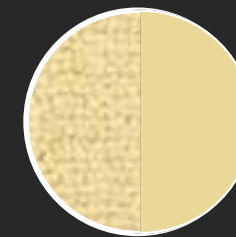
ROSA



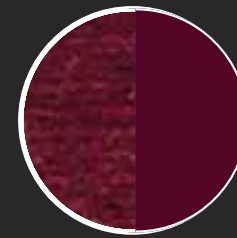
ROSATO



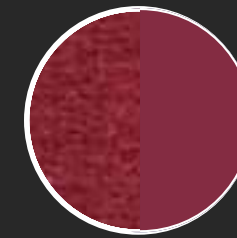
LILLA



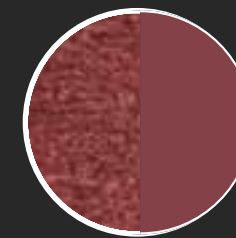
ORO



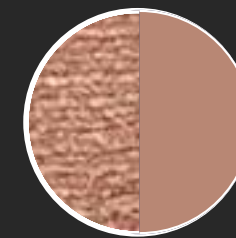
ROSSO 1092



ROSSO 1568



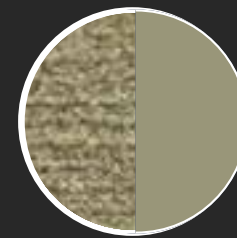
ARANCIO



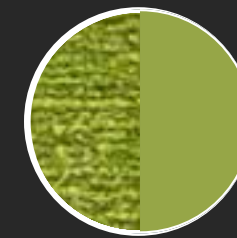
TERRACOTTA



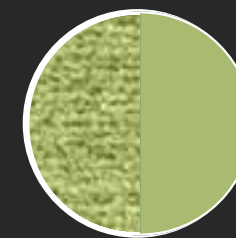
BRUGHIERA



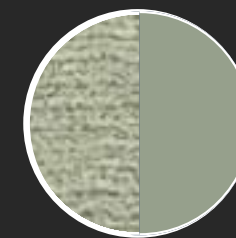
STEPPA



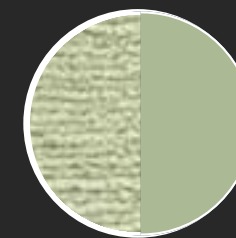
VERDE 3111



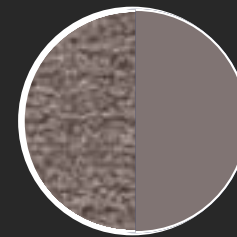
VERDE 3138



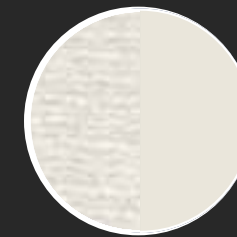
GIADA



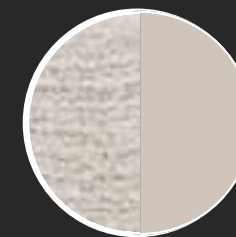
OLIVO



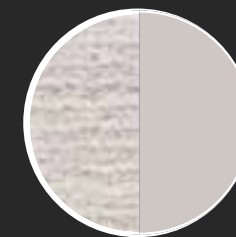
TORTORA



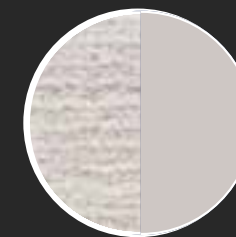
SILVER



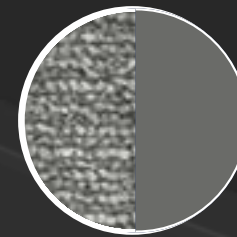
GRIGIO CHIARO



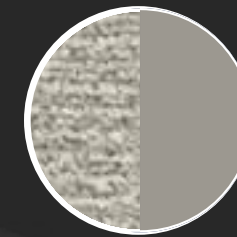
FUMO



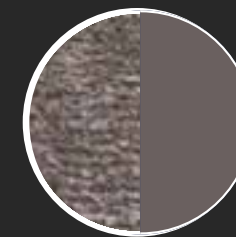
SELCE



PLUMBEO



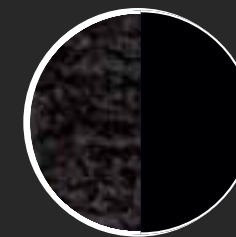
ARGENTO



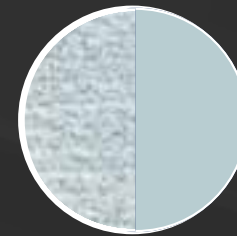
PIOMBO



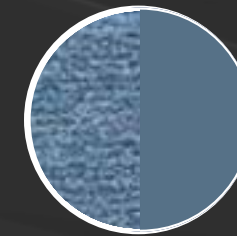
ANTRACITE



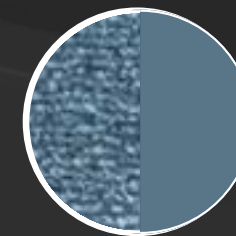
NERO



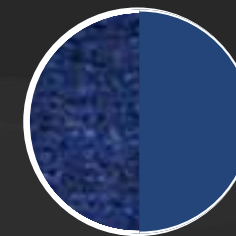
FIORDALISO



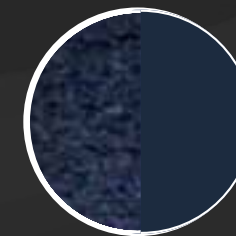
BLU 2047



BLU 2049



BLU 2069



ZAFFIRO

ABETONE CLUB

A SUPREME CUT & LOOP WILTON COLLECTION

WILTON CUT&LOOP

PILE HEIGHT



6 mm

COMPOSITION



100% NEW ZEALAND WOOL

YARN WEIGHT



1211 g/m²

RECOMMENDED FOR

CORRIDORS

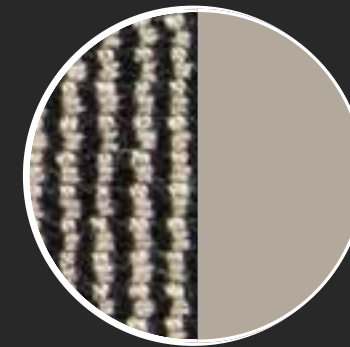
CABINS

PUBLIC AREAS

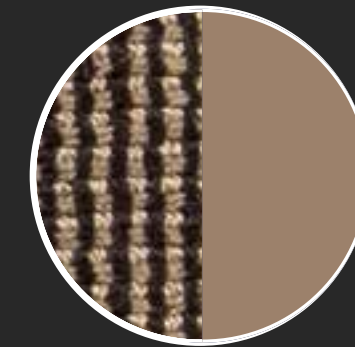


ABETONE CLUB

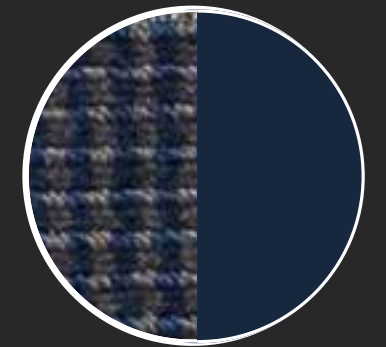
16 COLORS



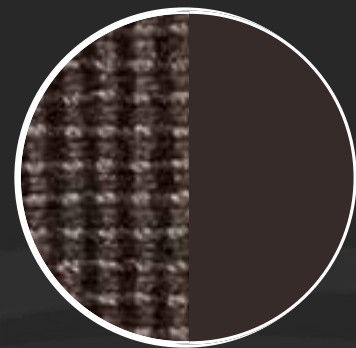
PANDA



CAFFE'



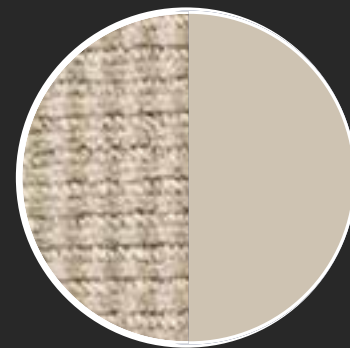
ABISSO



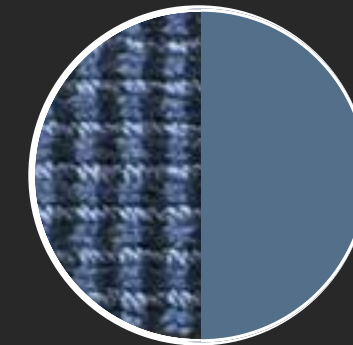
LONTRA



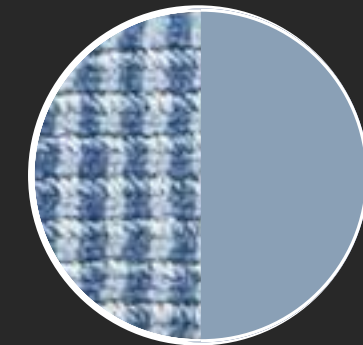
NOCCIOLA



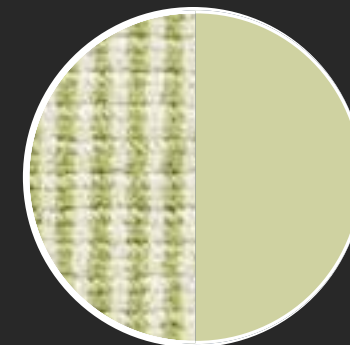
CREMA



OCEANO



CIELO



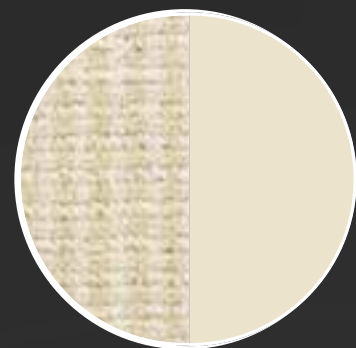
MELA



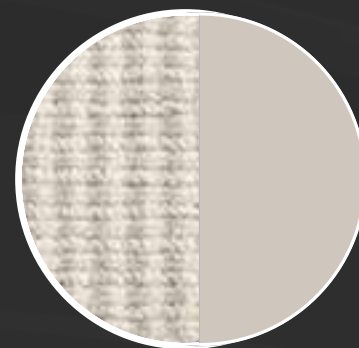
ABETE



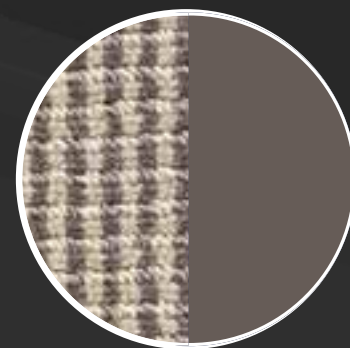
CENERE



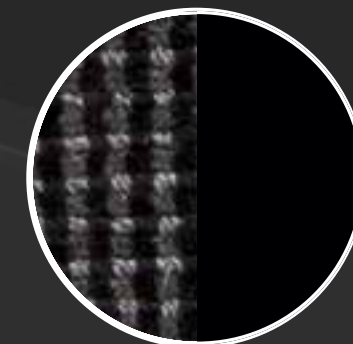
ALPACA



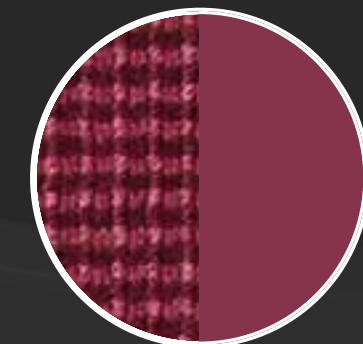
OSTRICA



BISCOTTO



GRANITO



DALIA

ABETONE SOLO

PREMIUM QUALITY IN A SIMPLE DESIGN

WILTON CUT&LOOP PILE

PILE HEIGHT



7 mm

COMPOSITION



100% NEW ZEALAND WOOL

YARN WEIGHT



1248 g/m²

RECOMMENDED FOR

CORRIDORS

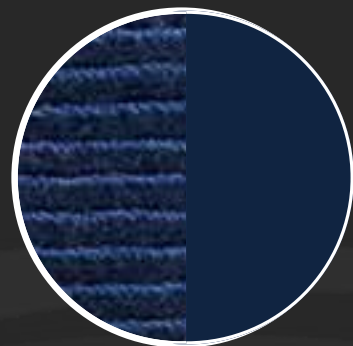
CABINS

PUBLIC AREAS

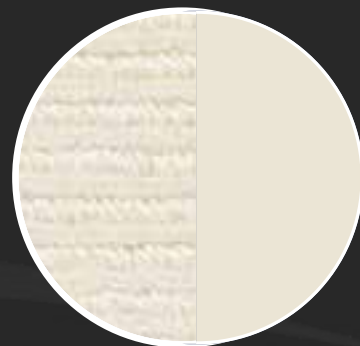


ABETONE SOLO

14 COLORS



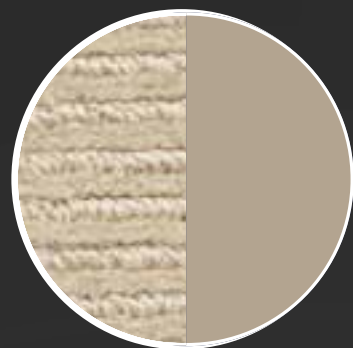
ACADEMY



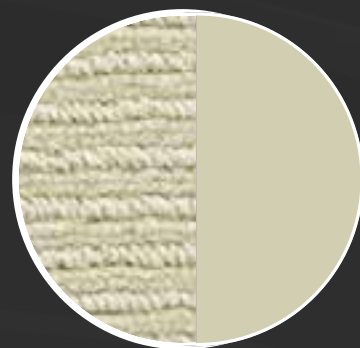
IVORY



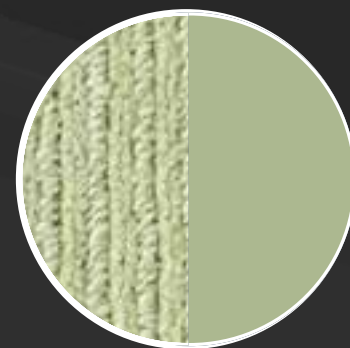
BARLEY



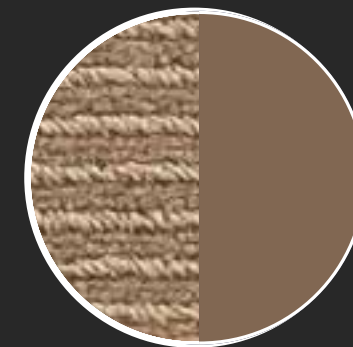
MOCHA



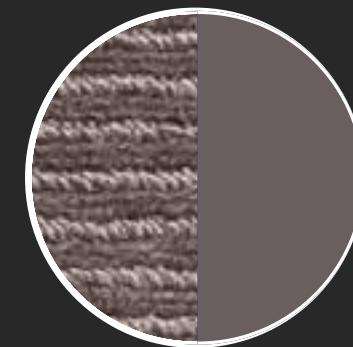
SAGE



CELEDON



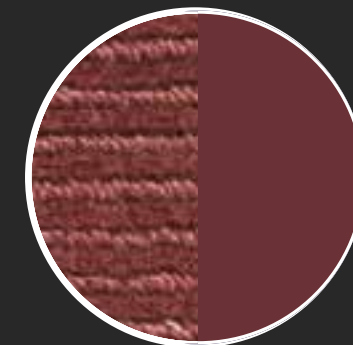
CAMEL



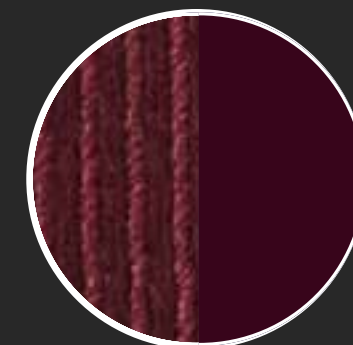
CAPPUCCINO



ESPRESSO



PAPRIKA



RUBY



ASH



ARDESIA



EBONY

HI DECOR

EXTREME RESISTANCE IN HIGH DEFINITION

TUFTING CUT PILE PRINTED

PILE HEIGHT



5,3 / 6 / 6,3 mm

COMPOSITION



100% POLYAMIDE 6.6

YARN WEIGHT



900 / 1100 / 1300 g/m²

RECOMMENDED FOR

CORRIDORS

CABINS

PUBLIC AREAS



WOOL DECOR

TUFTING CUT PILE PRINTED

AVAILABLE WITH **IMO** FELT BACKING

PILE HEIGHT



7 / 7,3 mm

COMPOSITION



80% NEW ZEALAND WOOL
20% POLYAMIDE

YARN WEIGHT



1250 / 1400 g/m²

RECOMMENDED FOR

CORRIDORS

CABINS

PUBLIC AREAS



MOSAICO

TUFTING CUT&LOOP PRINTED

PILE HEIGHT



5,2 mm

COMPOSITION



100% POLYAMIDE

YARN WEIGHT



950 g/m²

RECOMMENDED FOR

CORRIDORS

CABINS

PUBLIC AREAS



WOOL STYLE

TUFTING LOOP PILE PRINTED

PILE HEIGHT



3,8 mm

COMPOSITION



100% NEW ZEALAND WOOL

YARN WEIGHT



1000 g/m²

RECOMMENDED FOR

CORRIDORS

CABINS

PUBLIC AREAS



WINDSOR

WILTON FACE TO FACE

PILE HEIGHT



7 / 9 mm

COMPOSITION



80% NEW ZEALAND WOOL
20% POLYAMIDE

YARN WEIGHT



From 1220 to 1564 g/m²

RECOMMENDED FOR

CORRIDORS

CABINS

PUBLIC AREAS



AXMINSTER

TRADITIONAL AXMINSTER

PILE HEIGHT



7,1 mm

COMPOSITION



80% NEW ZEALAND WOOL
20% POLYAMIDE

YARN WEIGHT



from 1050 to 1480 g/m²

RECOMMENDED FOR

CORRIDORS

CABINS

PUBLIC AREAS



CREMA 7

WILTON LOOP PILE
IMO WALL CERTIFICATED

PILE HEIGHT



2 mm

COMPOSITION



100% NEW ZEALAND WOOL

YARN WEIGHT



790 g/m²

CORRIDORS

CABINS

PUBLIC AREAS





Our projects

COSTA NEOROMANTICA

COSTA CROCIERE



COSTA FAVOLOSA

COSTA CROCIERE



CUNARD QUEEN MARY II

CUNARD LINE



YACHT IPANEMA

MONDOMARINE YACHTS



CARNIVAL BREEZE

CARNIVAL CRUISE LINE



CARNIVAL VISTA

CARNIVAL CRUISE LINE



PONANT LE BOREAL

COMPAGNIE DU PONANT



PONANT L'AUSTRAL



P&O BRITANNIA

P&O CRUISES



NIEUW AMSTERDAM

HOLLAND AMERICA LINE



QUEEN ELIZABETH II

HOTEL & RESTAURANT DUBAI



A SELECTION OF OUR PROJECTS

CRUISES

| | |
|--------------------|----------------------|
| CARNIVAL HORIZON | CARNIVAL CRUISE LINE |
| CARNIVAL SPLENDOR | CARNIVAL CRUISE LINE |
| CARNIVAL DREAM | CARNIVAL CRUISE LINE |
| CARNIVAL MAGIC | CARNIVAL CRUISE LINE |
| CARNIVAL VICTORY | CARNIVAL CRUISE LINE |
| CARNIVAL VISTA | CARNIVAL CRUISE LINE |
| CARNIVAL BREEZE | CARNIVAL CRUSIE LINE |
| L'AUSTRAL | COMPAGNIE DU PONANT |
| LE BOREAL | COMPAGNIE DU PONANT |
| LE SOLEAL | COMPAGNIE DU PONANT |
| COSTA DELIZIOSA | COSTA CROCIERE |
| COSTA DIADEMA | COSTA CROCIERE |
| COSTA FASCINOSA | COSTA CROCIERE |
| COSTA FAVOLOSA | COSTA CROCIERE |
| COSTA LUMINOSA | COSTA CROCIERE |
| COSTA NEOCLASSICA | COSTA CROCIERE |
| COSTA NEOROMANTICA | COSTA CROCIERE |
| COSTA PACIFICA | COSTA CROCIERE |
| QUEEN MARY II | CUNARD LINE |
| EURODAM | HOLLAND AMERICA LINE |
| NIEUW AMSTERDAM | HOLLAND AMERICA LINE |
| GRAND CELEBRATION | IBERO CRUCEROS |
| BRITANNIA | P&O CRUISES |
| VENTURA | P&O CRUISES |
| CROWN PRINCESS | PRINCESS CRUISES |
| EMERALD PRINCESS | PRINCESS CRUISES |
| PRINCE ALBERT II | SILVERSEA CRUISES |

FERRIES

| | |
|-------------------|--------------------------|
| AF FRANCESCA | ADRIA FERRIES |
| DIAGORAS | BLUE STAR FERRIES |
| MARINASECONDA | CORSICA FERRIES |
| MEGA EXPRESS FOUR | CORSICA FERRIES |
| MEGA EXPRESS TWO | CORSICA FERRIES |
| PASCAL LOTA | CORSICA FERRIES |
| SARDINIA VERA | CORSICA FERRIES |
| VICTORIA | CORSICA FERRIES |
| MONTE D'ORO | CORSICA LINEA |
| PASCAL PAOLI | CORSICA LINEA |
| CARTHAGE | COTUNAV |
| MAGELLAN | CRUISES MARITIME VOYAGES |
| BERLIN | FTI CRUISES |
| COLUMBUS | LYRIC CRUISES |
| MOBY LOVE | MOBY LINES |
| FINNMAID | NORDLINK |
| ASTORIA | STORY CRUISES |
| MARCO POLO | STORY CRUISES |
| SUPERFAST I | SUPERFAST FERRIES |
| SUPERFAST II | SUPERFAST FERRIES |
| BITHIA | TIRRENIA |
| FLORIO | TIRRENIA |
| JANAS | TIRRENIA |
| NURAGHES | TIRRENIA |
| SHARDEN | TIRRENIA |
| VOYAGER | VARIETY CRUISES |
| RIGEL | VENTOURIS FERRIES |



RADICI PIETRO INDUSTRIES & BRANDS S.P.A.

Via Cavalier Pietro Radici, 19 - 24026 Cazzano Sant'Andrea (BG) - ITALY
Tel +39 035 0950 231 / +39 035 0950 309
info@radici.it - www.radici.it