

WEIHAI HAIMA CARPET GROUP CO., LTD.
Address: No. 329 Qingdao South Road, Weihai, Shandong, China
Tel: +86 631 5234746 5226390 Fax: +86 631 5211680 5226887
Web Site: www.haimacarpet.com
E-mail: market@haimacarpet.com E-mail: wangbc@haimacarpet.com

威海海马地毯集团有限公司
地址: 中国山东威海青岛南路329号
网址: http://www.haimacarpet.com
电话: +86 631 5220592 传真: +86 631 5239346
电子邮箱: sale@haimacarpet.com

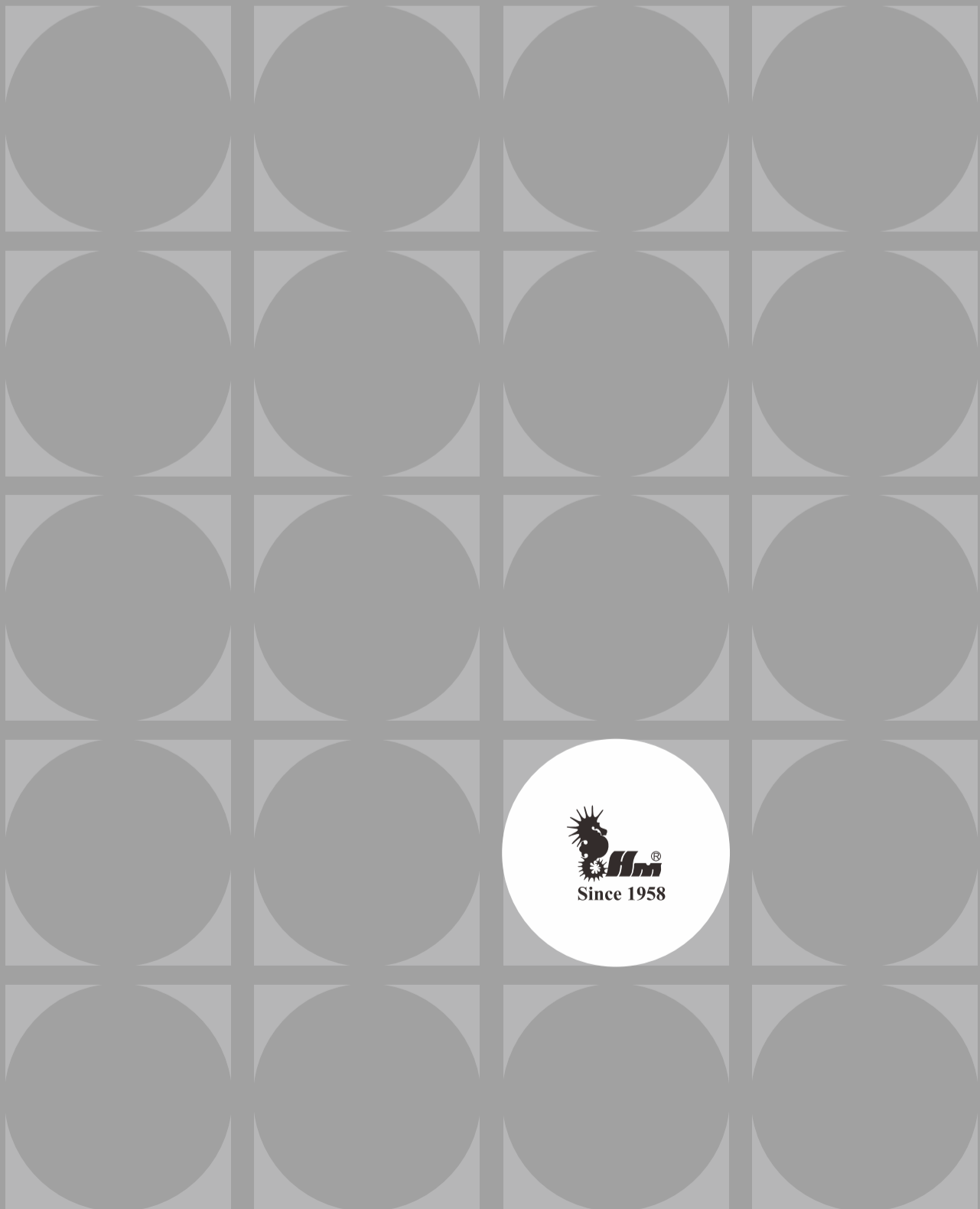


2023

HAIMA NYLON LEVEL LOOP
CARPET TILE
海马尼龙平圈方块地毯

T1000 T2000

www.haimacarpet.com

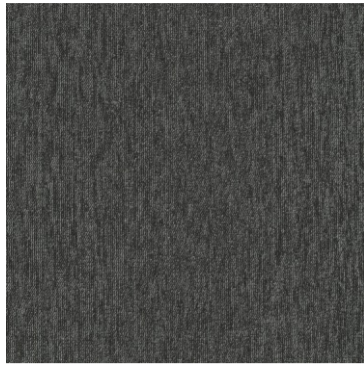


T1000 T2000 HAIMA CARPET

HAIMA NYLON LEVEL LOOP CARPET TILE



X3155



X1519



X1514



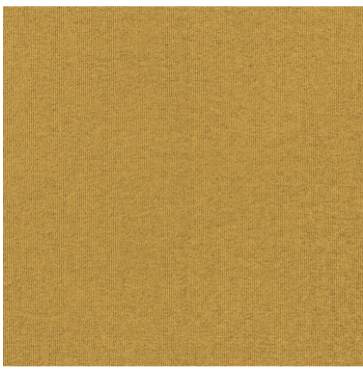
X1515



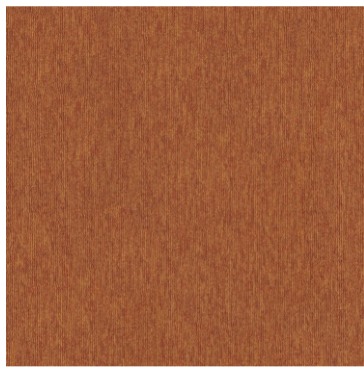
X1508



X1510



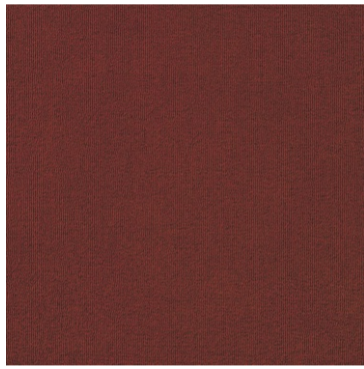
N3078



N3079



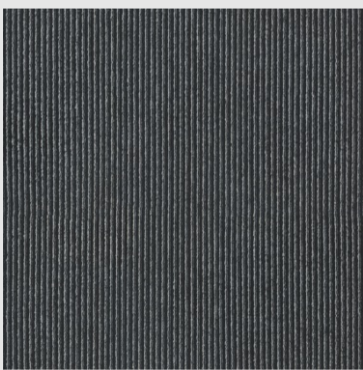
N6065



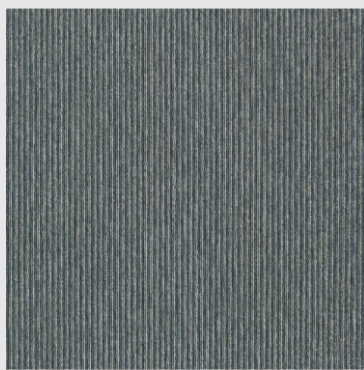
N5011

T1000 T2000 HAIMA CARPET

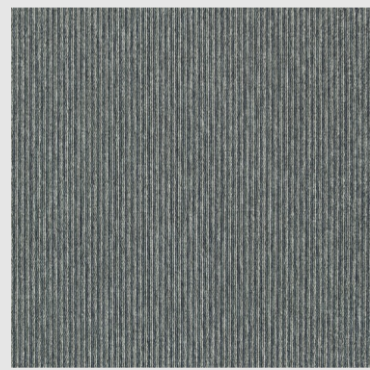
HAIMA NYLON LEVEL LOOP CARPET TILE



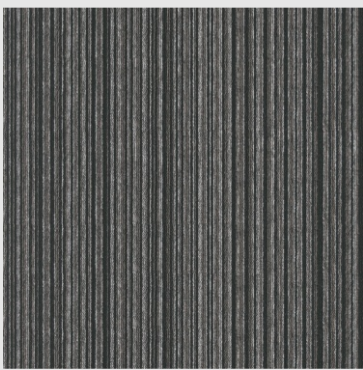
60640



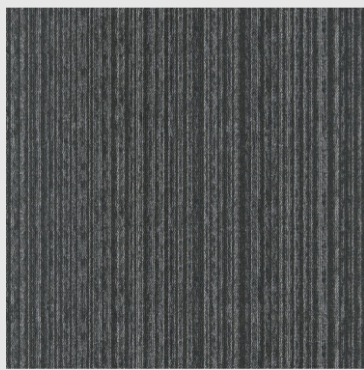
60641



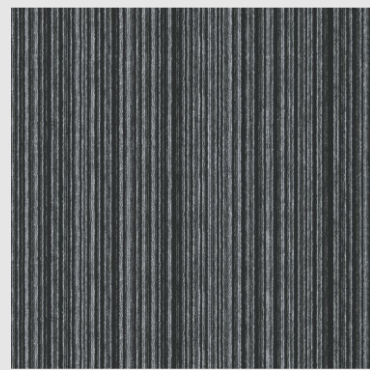
60642



60668



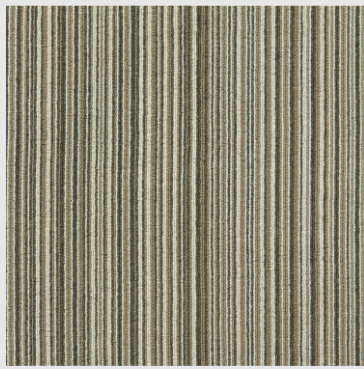
60671



60670



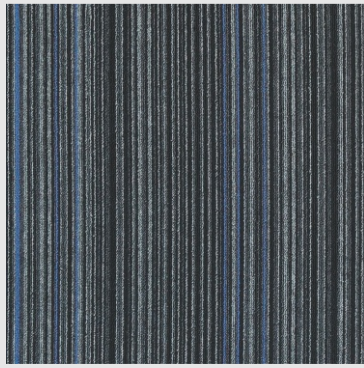
606F02



129016



606F01



606F03

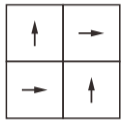
T1000 T2000 技术参数 Specifications

名称: 原液尼龙平圈方块地毯	Description:	Nylon Level Loop Carpet Tile
绒 纱: 100%原液尼龙	Face Fibre:	100% Nylon BCF
结 构: 平圈	Construction:	Level Loop
绒 高: 3.5 ± 0.5 mm	Pile Height:	3.5 ± 0.5 mm
绒 重: 550g/m ²	Pile Weight:	550g/m ²
针 距: 1/10"	Gauge:	1/10 "
底 背: PU 或PVC	Backing Material:	PU or PVC
尺 寸: 50x50cm	Size:	50x50cm

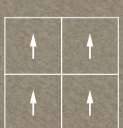




N6065 / X1510

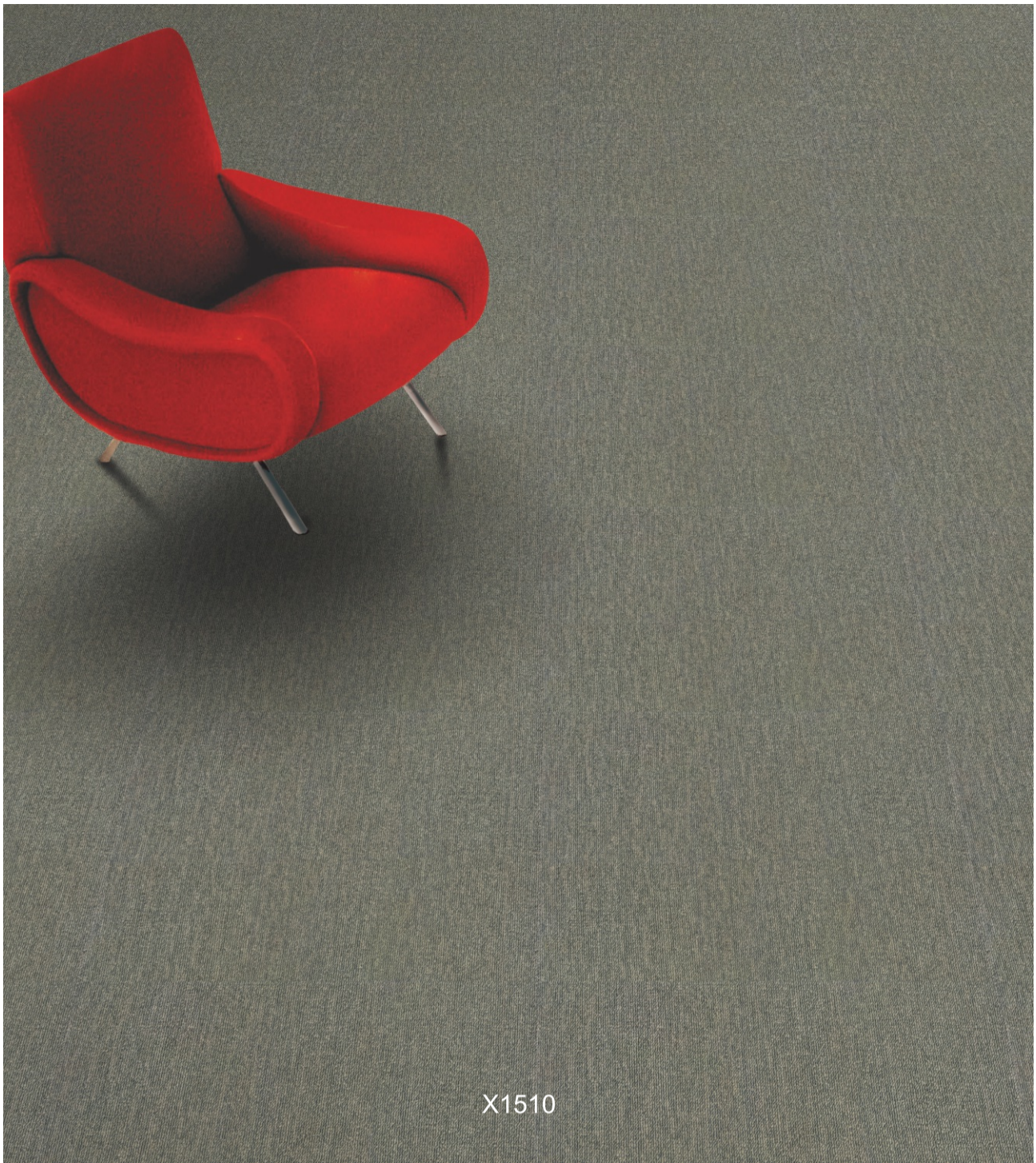


□: a piece of carpet tile
→: direction of carpet installation

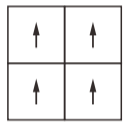


□: a piece of carpet tile
→: direction of carpet installation

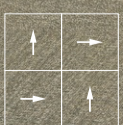
N5011/X3155



X1510

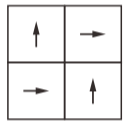


□: a piece of carpet tile
→: direction of carpet installation

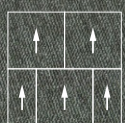


□: a piece of carpet tile
→: direction of carpet installation

X1508

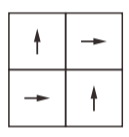
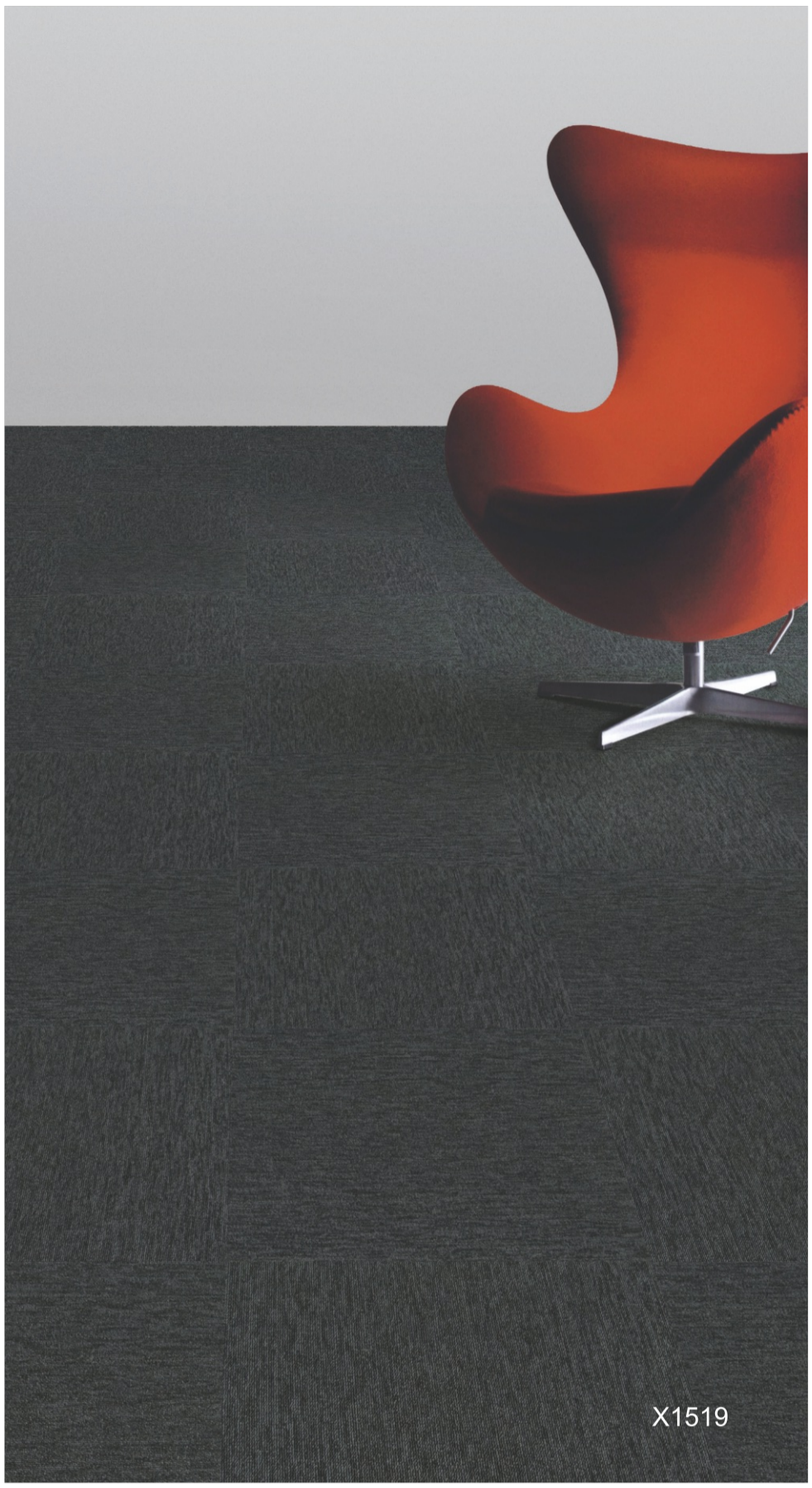


□: a piece of carpet tile
→: direction of carpet installation



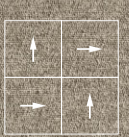
□: a piece of carpet tile
→: direction of carpet installation

X1515
X1508



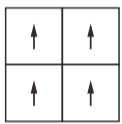
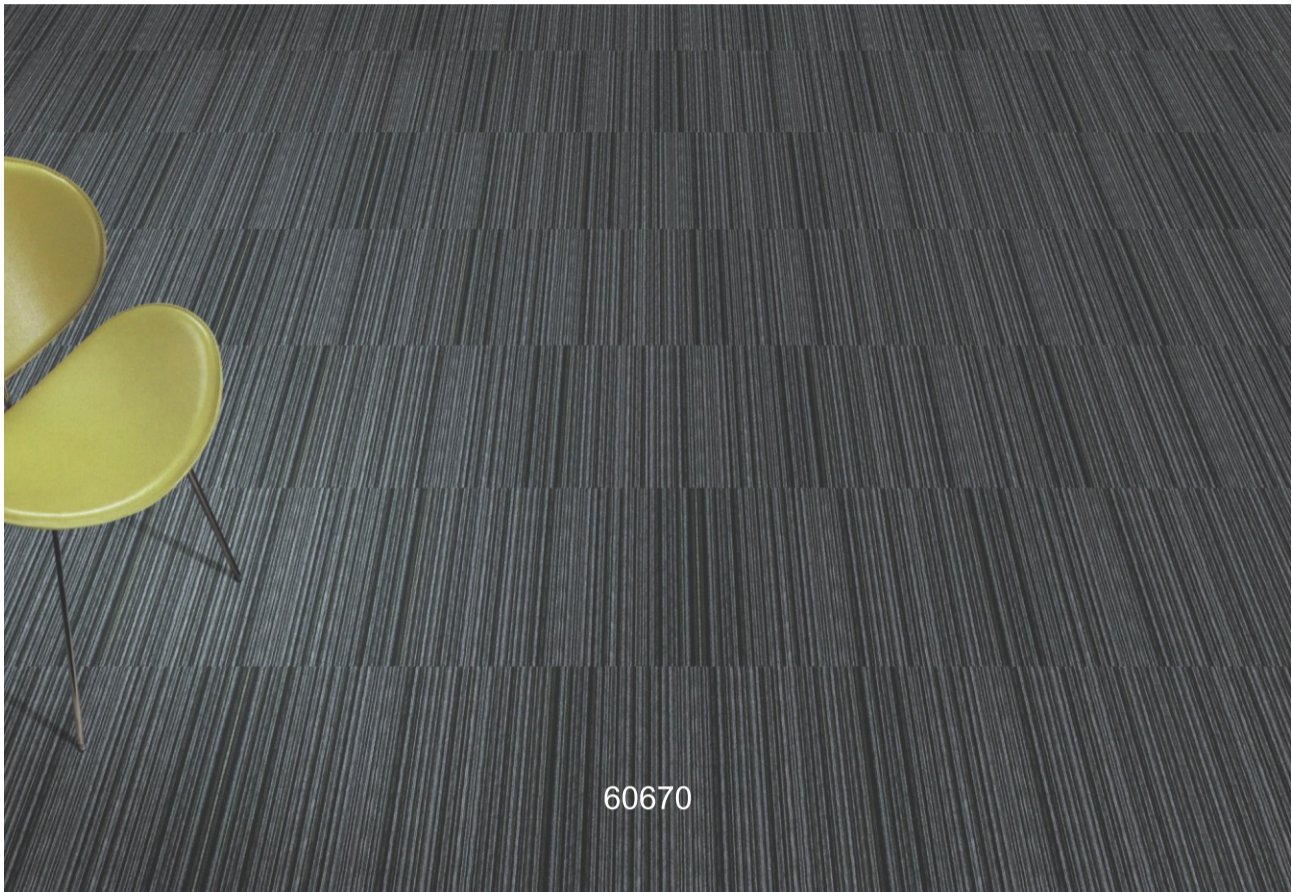
□: a piece of carpet tile
→: direction of carpet installation

X1519

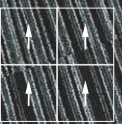


□: a piece of carpet tile
→: direction of carpet installation

X3155

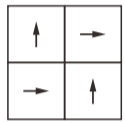


□: a piece of carpet tile
→: direction of carpet installation

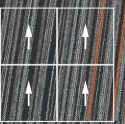


□: a piece of carpet tile
→: direction of carpet installation

606F03+60670



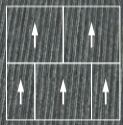
□: a piece of carpet tile
→: direction of carpet installation



□: a piece of carpet tile
→: direction of carpet installation

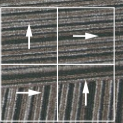
606F01+60668





□: a piece of carpet tile
→: direction of carpet installation

60642



□: a piece of carpet tile
→: direction of carpet installation

60668

